



LAWRENCEVILLE | ALPHARETTA-NORTH FULTON

Student Life News & Events

April / 28 / 2017



[Healthy Tip](#)
[Announcements](#)
[Student Perks](#)
[Contact Student Life](#)

Tyler Perry Live!



LEADERCAST 2017

Come out & listen to Hollywood Legend, Tyler Perry, at Leadercast! Vouchers available in the Student Center.

[Details Below.](#)

Fruits & Vegetables!



TUES. - THURS., MAY 2-4

Gwinnett Tech Horticulture is hosting its annual Edible Plant Sale. Various fruits and vegetables will be available for purchase.

[Details Below.](#)

M-TH / APR - Leadercast Vouchers

Don't miss the chance to see Hollywood legend Tyler Perry speak! We have FREE tickets for this event! Just swing by the Student Center with your student ID to get two free vouchers! The Leadercast event is Friday, May 5th. First come first served! Questions? Contact [Chantelle Bailey](#).

T-TH / MAY 2-4 - Edible Plant Sale

The Gwinnett Tech Environmental Horticulture program will hold a community plant sale to sell the plants that the students have grown. Offered at the sale will be various herbs, heirloom & hybrid tomatoes, hot & sweet peppers, squash, eggplants, strawberries, and much more! This event will take place in the Horticulture Greenhouse, adjacent to building 600 on the Lawrenceville campus from 9 a.m. to 4 p.m. Cash or check is preferred, but credit cards can only be accepted by the Business Office in building 100. For more information contact [Jean Harrison](#) or call 678-226-6298.

Future Dates

May 5 - Leadercast 2017

May 18 - Graduation



HEALTHY TIP

Laughter is the Best Medicine

Have you chuckled today? Research has suggested that laughter can reduce artery inflammation, decrease stress hormones and increase the good cholesterol in our bodies. Laughter is a great tool for bringing our mental and physical state back into balance by triggering the release of endorphins and relaxing the whole body. 1mhealthtips.com discusses the health benefits of laughter to your heart:

1. Laughter is a great cardio workout.
2. Laughter diffuses anger and conflict faster.
3. Laughter lowers your blood pressure.
4. Laughter reduces your stress hormone levels.

[To read the full article click here.](#)

If there is a topic you would like to know about or a tip that you'd like to share with us, please email [Morgan Taylor-Burns](mailto:Morgan.Taylor-Burns) with your suggestions!

[back to events](#)



ANNOUNCEMENTS!



Camp Imagination Station

Where every child's imagination is the only limit! Exciting activities for all children: weekly field trip and special activities; water play; atelier - art studio; dramatic play village; inventors warehouse; multi-media lab; game room and more! Weekly enrollment is available for children entering Kindergarten through 2nd grade. We have low child-teacher ratios. Camp Imagination Station will take place at the D. Scott Hudgens Jr. Early Education Center from May 30 - July 21 (8 weeks) from 7:00 a.m. - 6:15 p.m. Cost are \$180 per week or \$50 a day and this includes meals and field trips. Call 678-226-6510 to register today!

Poverty Simulation

The poverty simulation helps people understand the everyday realities faced by people whose incomes fall below the poverty line during and eye-opening, two hour experience. Participants assume the roles of members of low-income families, from single parents trying to care for their children to senior citizens trying to maintain their independence on Social Security. The intended result is an increased understanding of the struggles faced every day by people struggling to make ends meet. The event will take place on May 20th from 9:15 a.m. - 12:00 p.m. at Saint Leo University Gwinnett Center (3555 Koger Boulevard, Suite 105, Duluth, GA 30096). Limited Space! For registrations and inquiries please contact [Dr. Felicia Wilson](#).





Free OB Ultrasounds

Free OB ultrasounds are offered to GTC students. The Diagnostic Medical Sonography Program is seeking volunteers for OB ultrasounds preferably 18-32 weeks. Volunteers need to be prepared to stay for one hour and are scanned by GTC DMS students under direct credentialed faculty supervision. Volunteers receive FREE keepsake 3D images as well as the opportunity to see their baby in 4D. For more information or to schedule an appointment, please email [OB Sonography](#) or call 470-448-1211.

Pet Food/ Pet Supplies Drive

The Future Cardiovascular Technologist club will be sponsoring a pet food / pet supplies drive throughout the remainder of the semester. The drive will collect items for FurKids animal shelter and rescue. Collection boxes will be placed in the student lounge areas around campus. Some items being collected are: Fancy Feast Classic Chicken, Friskies Chicken Dinner Wet Food, Quality dog treats, Denta-Chews, Interactive dog toys, cat scratchers and refills, paper towels, wipes, etc. For more information, email [Kristen Buoy](#)

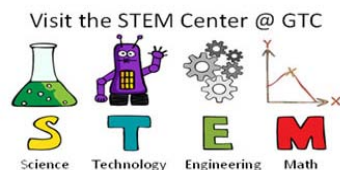


Georgia Cares

Georgia Cares is the single, statewide coordinating non-profit agency connecting services and treatment care for child victims of sexual exploitation and trafficking. Georgia Cares serves any and all youth who have been victimized in the state of Georgia. Our mission is to ensure that child sex trafficking victims receive quality care and services in the state of Georgia. For more information [visit our website.](#)

Gwinnett Tech STEM Center

The STEM Center is a peer tutoring center in building 900, room 1.109 for students taking Life Sciences classes or anyone trying to get in a healthcare program. The STEM center is open Monday - Thursday from 9 a.m. - 6 p.m. and Friday from 9 a.m. - 4 p.m. Be sure to join us every Thursday evening at 6 p.m. and every Friday morning at 10 a.m. for an A&P I Q&A. Need help with Chemistry? Ms. Francois is available to help Tuesdays from 9:30 a.m. to 11:30 a.m. and Wednesdays 10:30 a.m. to 11:30 a.m. For more information please [Casey Best](#)



Quality Childcare Available on Campus

Do you have young children? Do you know of someone who is looking for a high quality child care center for their child? The Hudgens Early Education Center is the best place for all children! Please come in for a visit today (building 800)! Or call for more information 678-226-6510. Enrolling children 6 weeks to 5 years. Open daily from 7:00 a.m. to 6:15 p.m. Enrollment is open to the community! Childcare tuition assistance is available for full time GTC students and we accepts CAPS.

Run, Hide, Fight

As a part of Gwinnett Tech's preparedness objective, we want to provide everyone with a safe and healthy learning environment. With the increase of incidents on college campuses, schools and public places, it is increasingly important to have a plan for how to respond in an active shooter situation. Students and employees can help prevent and prepare for potential active shooter situations by viewing the "Run, Hide, Fight - Surviving an Active Shooter Event" video. The video will assist you in planning for your personal safety. [watch video.](#)



Collecting Aluminum Can Tabs



The Future Cardiovascular Technologist Club and the Association for Radiologic Technologist are collecting can tabs. One gallon of tabs equals a one night stay in the Ronald McDonald House for a family. Together, we've already collected eight gallons, but we can do more! Help us by bringing your aluminum can tabs to building 100 near Chick-Fil-A, building 100 near the bookstore in the cafeteria area, building 900 lobby, building 200 - room 121, 245, 133 or the student lounge and the Alpharetta-North Fulton campus student lounge. Thank you for your support!

You Shop. Amazon Gives Back to GTC!

[Shop Amazon Smile](#) is giving back and all you have to do is go to the website and choose "Gwinnett Tech Foundation". The GTC Foundation will receive .05% of every dollar you spend that qualifies and in turn, we will apply these dollars back into Gwinnett Tech students! This is a win-win!!! If you have further questions, please contact [Darcie Johnson](#).



Did you know? GTC Has a No Interest Tuition Payment Plan!

Gwinnett Tech partners with [Nelnet Business Solutions](#) to let you pay tuition and fees over time, making college more affordable. Payment Plan Benefits include easy online enrollment, flexible payment options and no interest. [Learn more](#) about the tuition payment plan and enroll today!

Creating Safer, Healthier
Campus Communities

Haven UNDERSTANDING
SEXUAL ASSAULT

Learn more



Feel Stressed? You are not Alone!

Going to school can be tough. Life can be tough. Student Life has paid for all of our students to get four free counseling sessions through the Cameron & Associates Life Balance Program. Yes - it's FREE! Just call 404-845-3727 or visit them on the [web](#) and they will give you three counselors close to you to pick from. You are worth the investment!



Cameron and Associates, Inc

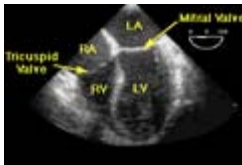
Providing a Higher Quality of Service

[back to events](#)

GTC STUDENT PERKS!

MUST SHOW CURRENT STUDENT/FACULTY ID TO RECEIVE DISCOUNTS.

[Click here for details](#)



[back to events](#)

CONTACT STUDENT LIFE

Rachel Mariano, Student Life Director
rmariano@gwinnetttech.edu
770-962-7580, ext.6341

Morgan Taylor-Burns, Student Life Specialist
mtaylor-burns@gwinnetttech.edu

770-962-7580, ext.6415

Chantelle Bailey, Student Life Assistant

cbailey@gwinnettech.edu

770-962-7580, ext.6419

Lawrenceville Campus . 5150 Sugarloaf Pkwy . Lawrenceville, GA 30043
Alpharetta-North Fulton Campus . 2875 Old Milton Parkway . Alpharetta, GA 30009